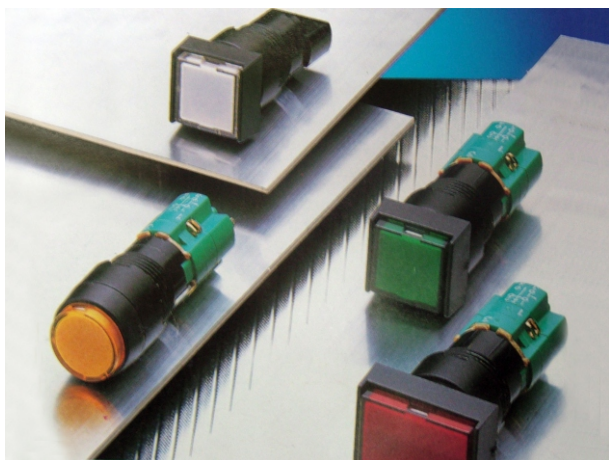
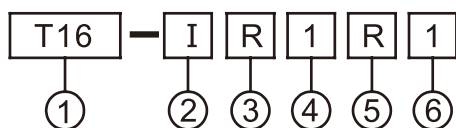


型號說明



性能

接觸抵抗	50mΩ max.
絕緣抵抗	100MΩ min. (at500VDC)
耐電壓	1500VAC, 50/60Hz for 1minute
使用周圍溫度	operating: -20°C ~80°C
使用周圍濕度	95% RH max.
動作力量	150 g
壽命	機械壽命: 1,000,000 operations min. 電氣壽命: 100,000 operations min.
重量	10 gr(1a1b)
	15 gr(4a4b)

項次	代號	說明	
1.固定孔徑	T16	16mm/m 系列	
2.型式	I	交替式照光按鈕	
	B	復歸式照光按鈕	
	P	指示燈	
	G	護蓋	
	W	防水膠套	
3.外形	R	圓形	
	S	正方形	
	L	長方形	
4.電壓	1	110VAC (霓虹燈泡)	
	2	220VAC (霓虹燈泡)	
	5	6VAC/DC (鎢絲燈泡)	
	6	18VAC/DC (鎢絲燈泡)	
	7	24VAC/DC (鎢絲燈泡)	
	8	30VAC/DC (鎢絲燈泡)	
	9	12VAC/DC (鎢絲燈泡)	
	5.顏色	R	紅
		G	綠
O		橙	
W		白	
BL		藍	
Y		黃	
6.接點	1	1a1b(1 No 1NC)	
	2	2a2b(2 No 2NC)	
	3	3a3b(3 No 3NC)	
	4	4a4b(4 No 4NC)	

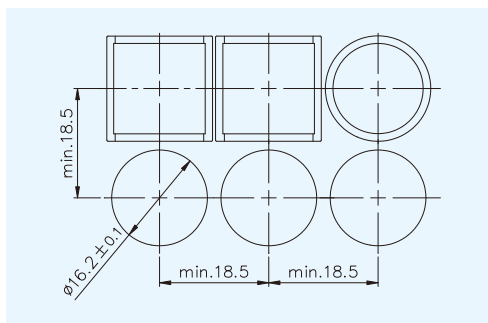
接點規格

額定絕緣電壓		250VAC	125VAC	接點	長度
額定接觸電流 (A)		3A	5A		
額定使用電流 (A)					
AC			DC		
電壓	AC13	AC12	電壓	DC13	DC12
110V	0.7A	1A	12V	0.7A	1A
220V	0.5A	0.5A	24V	0.7A	1A
				1a1b	41.5mm
				2a2b	49.5mm
				3a3b	57.5mm
				4a4b	65.5mm

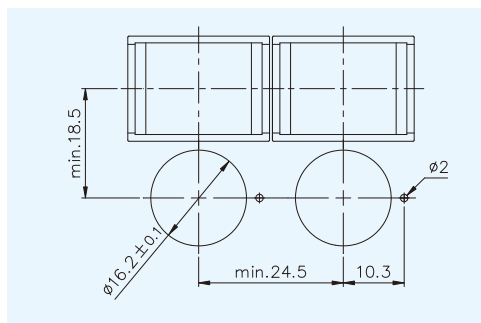
AC13/DC13: 電感性負載; AC12/DC12: 電阻性負載

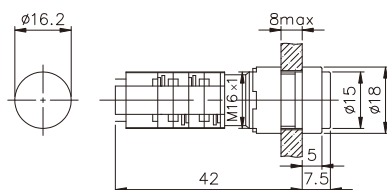
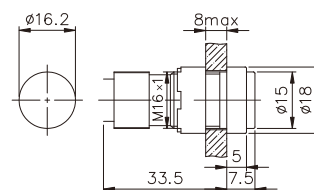
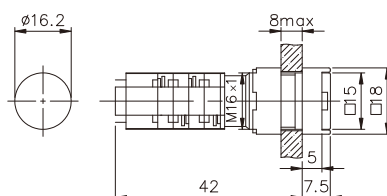
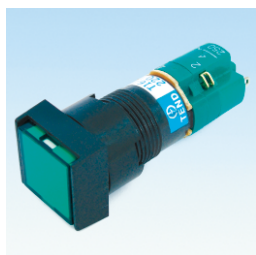
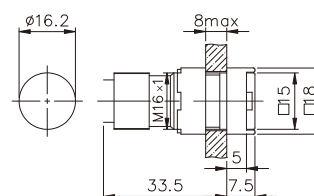
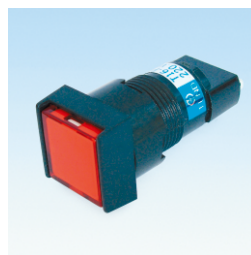
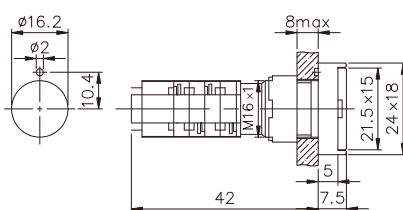
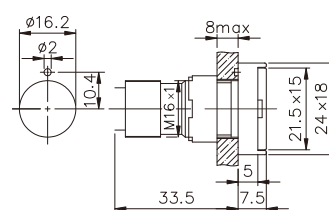
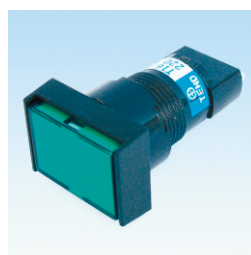
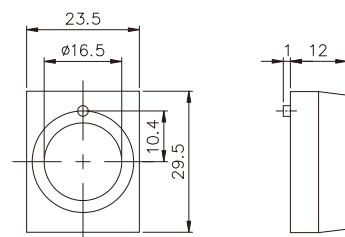
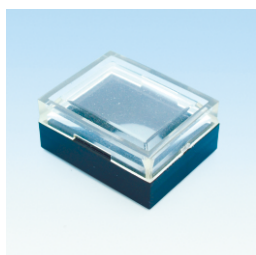
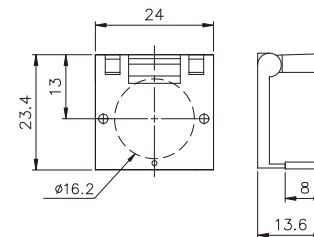
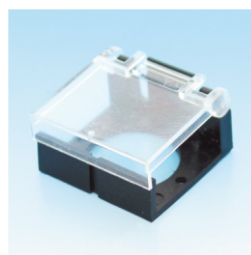
固定孔中心距離

- (圓形、方形) 指示燈、照光式按鈕開關



- (長方形) 指示燈、照光式按鈕開關



■外觀尺寸
**T16-IR (交替式)
T16-BR (復歸式)**

T16-PR圓型指示燈

**T16-IS (交替式)
T16-BS (復歸式)**

T16-PS方型指示燈

**T16-IL (交替式)
T16-BL (復歸式)**

T16-PL長方型指示燈

T16-WL防水套

TN16-GL長方形護蓋

**● Ø16m/m專用燈泡
T-4.5**


電壓 V	瓦特數 W	直徑 mm	長度 mm
6	0.3	4.2±0.2	16.5 ^{+0.5} ₋₁
12	0.5		
18	0.5		
24	0.5		
28	0.7		
110V	0.3		
220V	0.3		

**● 固定圈鎖緊與燈泡裝卸器
T16-A**
