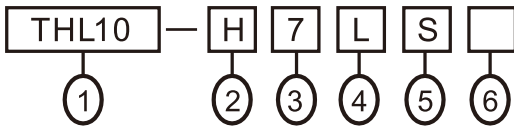


## CHARACTERISTICS

THL10 LED series are passed SGS CE

Lamp	Cold white LED	Warm white LED	Halogen lamp	Halogen lamp
Watt	8W		55W	70W
Voltage	12VAC/DC,24VAC/DC,100~240VAC		12VAC/DC	24VAC/DC
Illumination at 50cm	10000LUX. Min.	5500LUX. Min.	4500LUX. Min.	6800LUX. Min.
Life	30000hrs. Min.		800hrs. Min.	
IP rating	IP65			
Glass	Tempered glass			

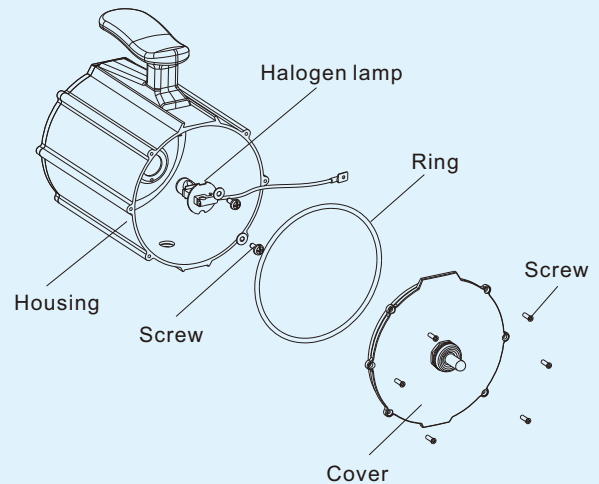
## MODEL DESCRIPTION



Designation	Signal	Description
1.Type	THL10	∅100mm Machine Lights
2.Lamp	7W	Warm white LED
	7C	Color white LED
	H	Halogen Lamp
3.Voltage	1	110VAC(Halogen Lamp)
	2	100~240VAC(LED)
	7	24VAC/DC
	9	12VAC/DC
4.Length	L	410mm+390mm
	M	410mm+115mm
	R	220mm+220mm
	S	--
5.Base	Space	Square 45mm*45mm
	L	L Type Base
	S6	Square 60mm*60mm
	T	Triangle Base
6.Color	Space	Silver
	B	Black

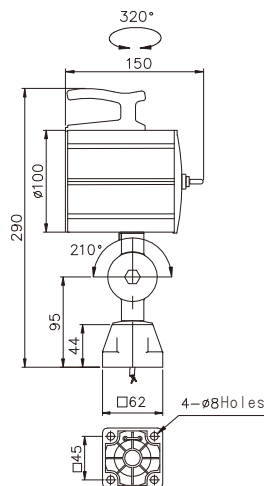
## HALOGEN LAMP REPLACEMENT MENU

- Step 1. Loosen the screws.
- Step 2. Release cover and O-ring
- Step 3. Loosen the screws and replace the Halogen lamp.

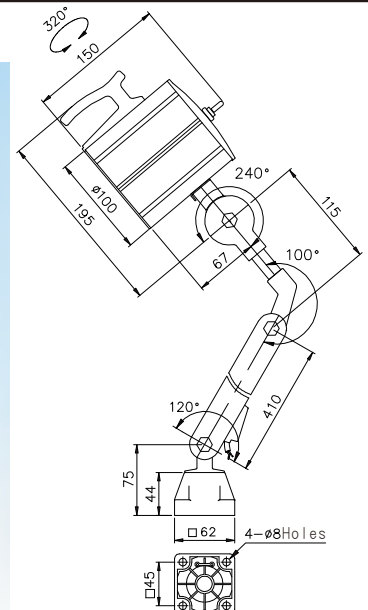


## DIMENSIONS

THL10-S

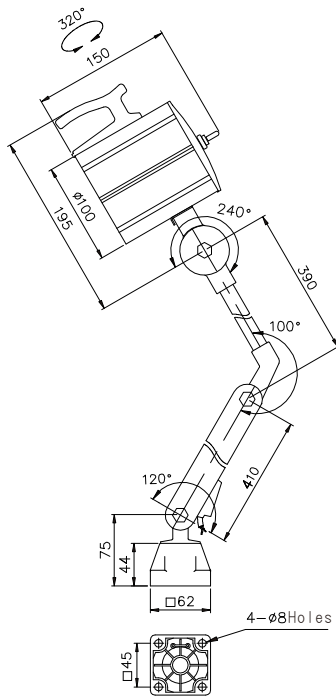


THL10-M

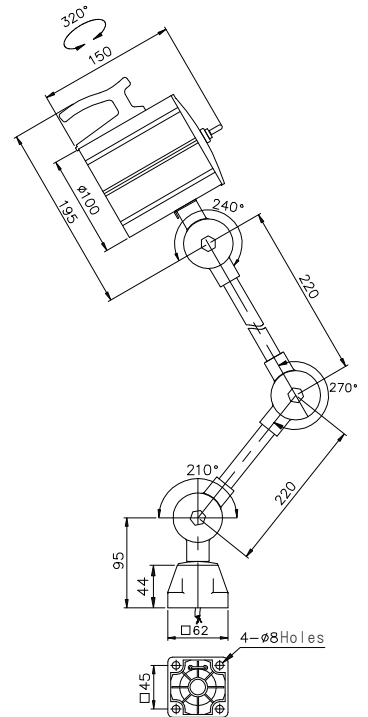


## ■ DIMENSIONS

THL10-L

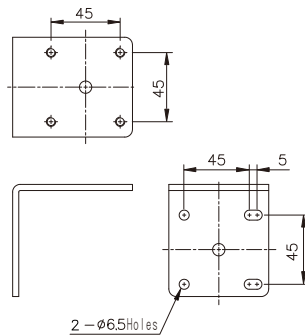


THL10-R

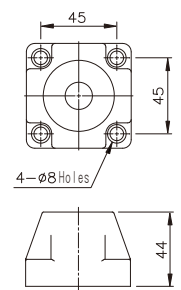


## ■ BASE DIMENSIONS

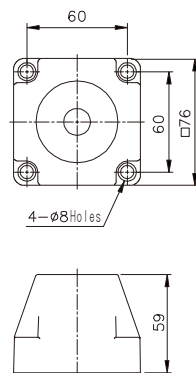
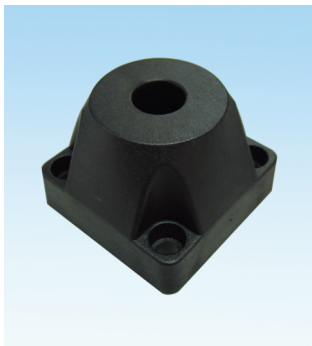
L Type Base  
(THL10-A)



Square 45mm\*45mm  
(THL10-S4)



Square 60mm\*60mm  
(THL10-S6)



Triangle Base  
(THL10-T)

