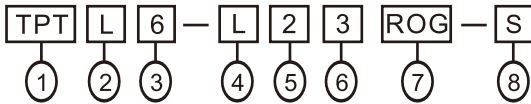


FEATURES

- Tend tower light can be installed in any machine as a status indicator by showing the color change of light and audible alarm. Tower light can be customer-made to meet different needs.
- Internal spring suspension can avoid damage to the bulb due to machine's vibration.
- Flexible wiring design: Steady, flashing of alarm are achievable through wiring by end user.
- Both bulb base for Incandescent bulb & LED is BA15S. So it is easy to change bulb type.
- Audio alarm buzzes at 90DB/30cm.

MODEL DESIGNATION



Item	Signal	Description
1.Mounting Method	TPT	Pole Mount
	TPW	Tray Mount
	TPF	Tented Type (Round Tray)
	TPFQ	Side Hitch Type
	TPA	Pole Stand Type
	TPS	Tented Type (Square Tray)
2.Functional	L	Continuous light
	F	Continuous or flashing light
	S	Continuous of flashing light with audible alarm
	B	Audible alarm light
3.Diameter	4	∅ 40mm (NO TPF, TPFQ)
	5	∅ 50mm
	6	∅ 60mm
	7	∅ 70mm
4.Bulb	Space	Incandescent
	L	LED
5.Voltage	1	110VAC
	2	220VAC
	7	24VAC/DC
	9	12VAC/DC
6.Section	1~5	1~5
7.Lens	R	Red
	O	Orange
	G	Green
	B	Blue
	W	White
8.Aluminum Tube Length	Space	Standard Length, TPT:288mm, TPF:0mm
	S	Special Length, TPT:138mm Special Length, TPF:193mm

• Standard wire length 0.5 meters.

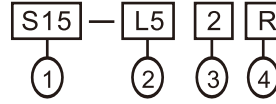
Rated current for Bulbs and Buzzers (Reference Only)

Incandescent	
S15-I49(12VAC/DC)	0.5A
S15-I47(24VAC/DC)	0.25A
S15-I41(110VAC)	0.05A
S15-I42(220VAC)	0.03A
S15-I59(12VAC/DC)	0.7A
S15-I57(24VAC/DC)	0.35A
S15-I51(110VAC)	0.06A
S15-I52(220VAC)	0.03A
S15-I69(12VAC/DC)	0.8A
S15-I67(24VAC/DC)	0.4A
S15-I61(110VAC)	0.08A
S15-I62(220VAC)	0.04A

LED	
S15-L59(12VDC)	0.08A
S15-L59(12VAC)	0.15A
S15-L57(24VDC)	0.05A
S15-L57(24VAC)	0.07A
S15-L51(110VAC)	0.02A
S15-L52(220VAC)	0.02A

Buzzer	
12V AC/DC	0.08A
24V AC/DC	0.02A
110V AC	0.01A
220V AC	0.01A

BULB MODEL DESIGNATION

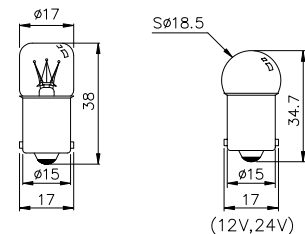


Item	Signal	Description
1.Base Type	S15	BA15S Bulb
2.Lens Diameter	14	∅ 40mm, 5W Incandescent
	15	∅ 50mm, 8W Incandescent
	16	∅ 60mm/∅70mm, 10W Incandescent
	L5	∅ 50mm/∅60mm/∅70mm, LED
3.Voltage	1	110VAC
	2	220VAC
	7	24VAC/DC
	9	12VAC/DC
4.Color	Space	Incandescent
	R	Red
	O	Orange
	G	Green
	B	Blue
	W	White

LAMP DIMENSIONS

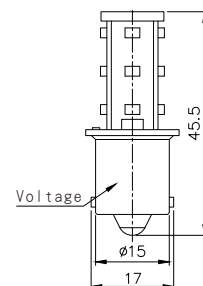
Incandescent

S15-I□□



LED

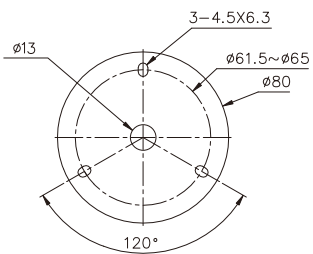
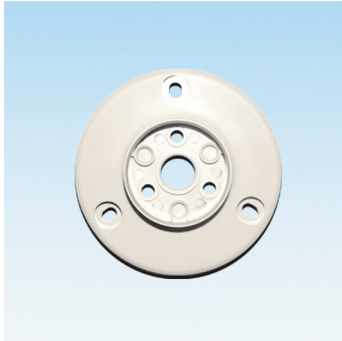
S15-L5□□



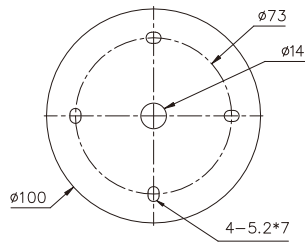
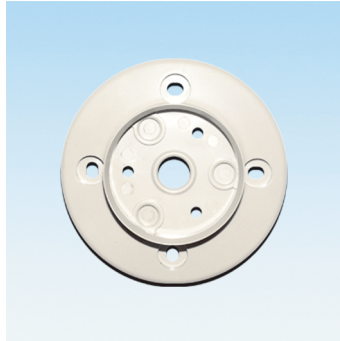
■ MOUNTING HOLES

● TRAY MOUNTING BRACKET

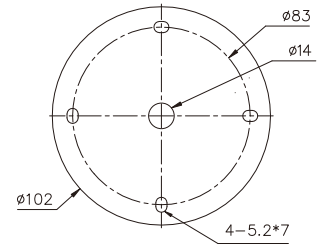
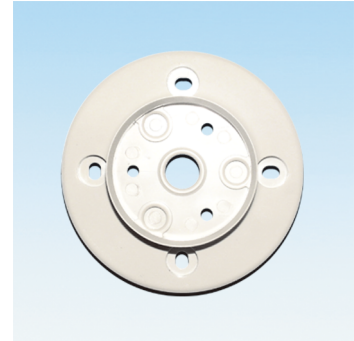
TPW □4/TPW □5



TPW □6



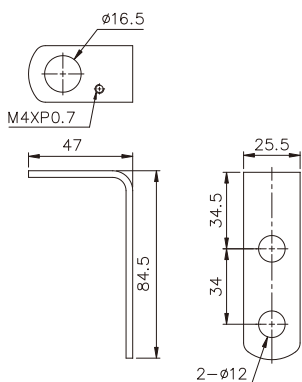
TPW □7



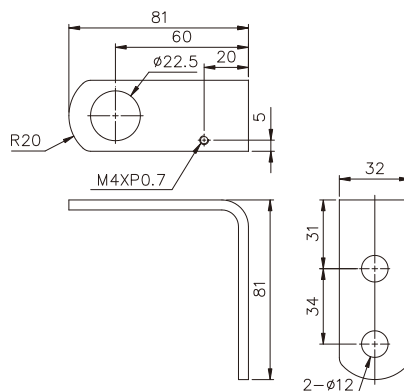
■ MOUNTING HOLES

● POLE MOUNTING BRACKET

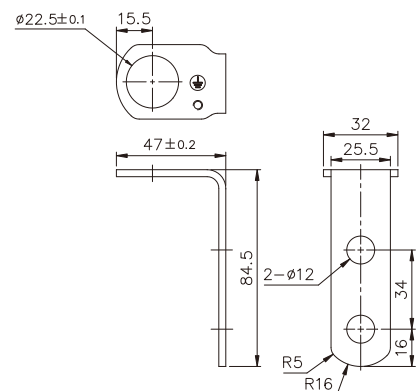
Used TPTL4



Used TPT □6/TPT □7



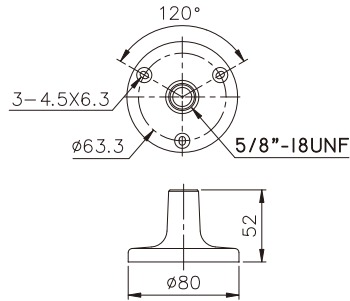
Used TPTF4/TPTS4/TPTB4
TPT □5



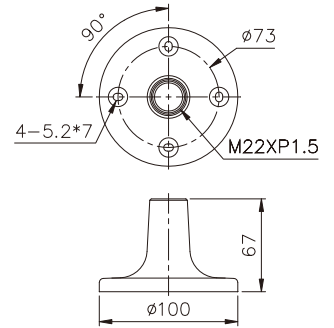
■ MOUNTING HOLES

- POLE MOUNTING BRACKET(OPTIONAL)

TPTL-S
Used TPSSL4



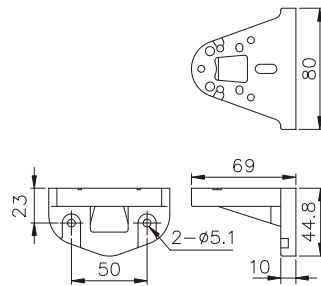
TPTL6-S
Used TPSS4/TPSF4/TPSB4
TPS□5/TPS□6/TPS□7



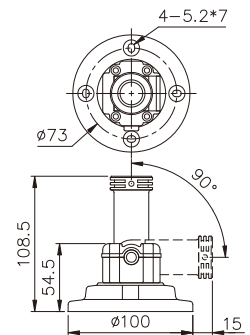
■ MOUNTING HOLES

- SIDE MOUNTING BRACKET(OPTIONAL)

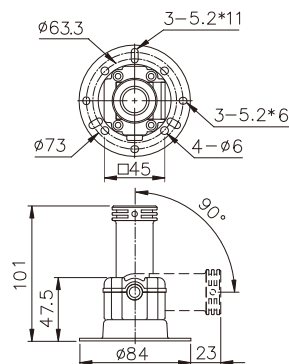
TPTL6-A
Used TPA□4
TPA□5/TPA□6/TPA□7



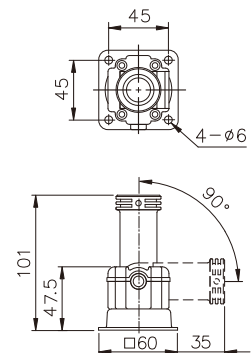
TPTL6-F
Used TPFS4/TPFF4/TPFB4
TPF□5/TPF□6/TPF□7



TPTL5-F
Used TPFS4/TPFF4/TPFB4
TPF□5/TPF□6/TPF□7



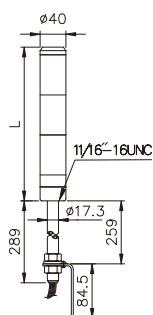
TPTL5-FS
Used TPFS4/TPFF4/TPFB4
TPF□5/TPF□6/TPF□7





DIMENSIONS

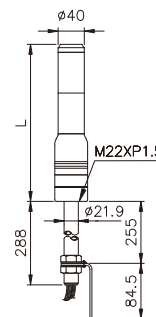
TPTL4



• TPTL4:

SECTION	L
1	114
2	176
3	238
4	300
5	362

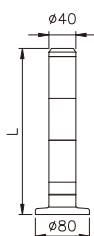
TPTF4/TPTS4/TPTB4



• TPTF4/TPTS4
TPTB4:

SECTION	L
1	177
2	239
3	301
4	363
5	425

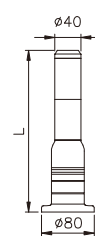
TPWL4



• TPWL4:

SECTION	L
1	122
2	184
3	246
4	308
5	370

TPWF4/TPWS4/TPWB4

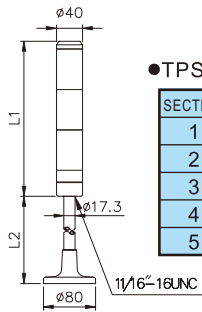


• TPWF4/TPWS4
TPWB4:

SECTION	L
1	183
2	245
3	307
4	369
5	431

DIMENSIONS

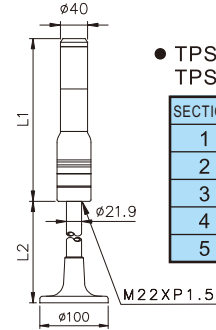
TPSL4



●TPSL4:

SECTION	L1	L2
1	114	Short 133 Long 298
2	176	
3	238	
4	300	
5	362	

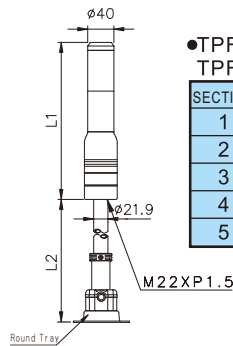
TPSF4/TPSS4/TPSB4



●TPSF4/TPSS4
TPSB4:

SECTION	L1	L2
1	177	Short 161 Long 322
2	239	
3	301	
4	363	
5	425	

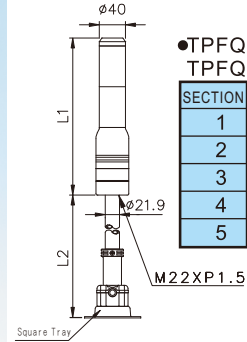
TPFF4/TPFS4/TPFB4



●TPFF4/TPFS4
TPFB4:

SECTION	L1	L2
1	177	Short 101 Long 301
2	239	
3	301	
4	363	
5	425	

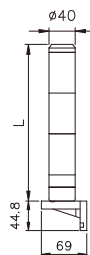
TPFQF4/TPFQS4/TPFQB4



●TPFQF4/TPFQS4
TPFQB4:

SECTION	L1	L2
1	177	Short 101 Long 301
2	239	
3	301	
4	363	
5	425	

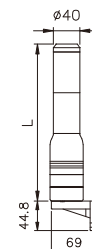
TPAL4



●TPAL4:

SECTION	L
1	114
2	176
3	238
4	300
5	362

TPAF4/TPAS4/TPAB4

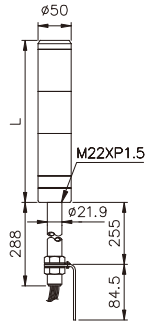


●TPAF4/TPAS4
TPAB4:

SECTION	L
1	177
2	239
3	301
4	363
5	425

DIMENSIONS

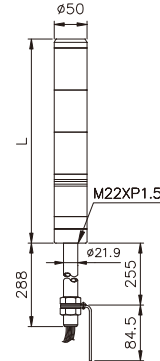
TPTL5



• TPTL5:

SECTION	L
1	118
2	182
3	246
4	310
5	374

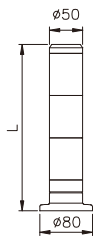
TPTF5/TPTS5/TPTB5



• TPTF5/TPTS5
TPTB5:

SECTION	L
1	182
2	246
3	310
4	374
5	438

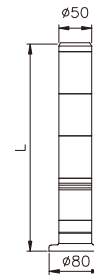
TPWL5



• TPWL5:

SECTION	L
1	124
2	188
3	252
4	316
5	380

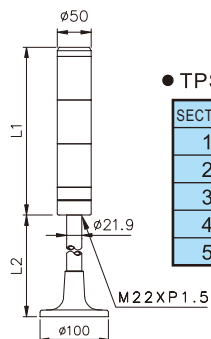
TPWF5/TPWS5/TPWB5



• TPWF5/TPWS5
TPWB5:

SECTION	L
1	188
2	252
3	316
4	380
5	444

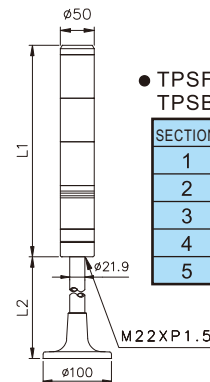
TPSL5



• TPSL5:

SECTION	L1	L2
1	118	Short 161 Long 322
2	182	
3	246	
4	310	
5	374	

TPSF5/TPSS5/TPSB5

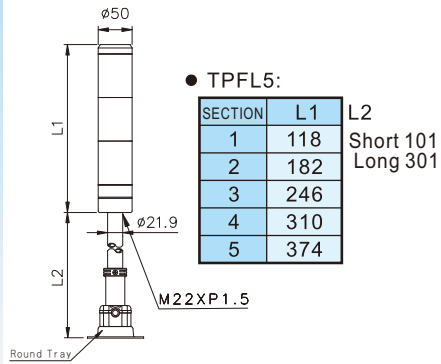


• TPSF5/TPSS5
TPSB5:

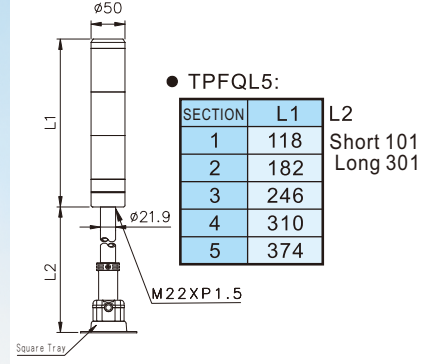
SECTION	L1	L2
1	182	Short 161 Long 322
2	246	
3	310	
4	374	
5	438	

DIMENSIONS

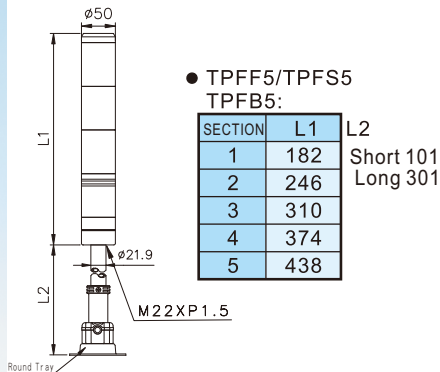
TPFL5



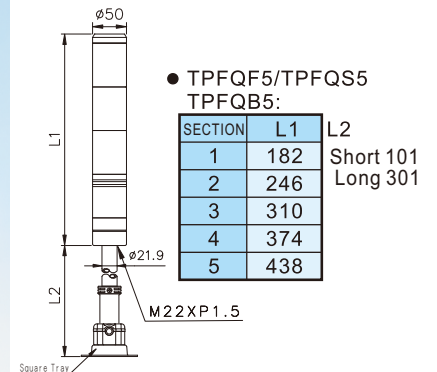
TPFQL5



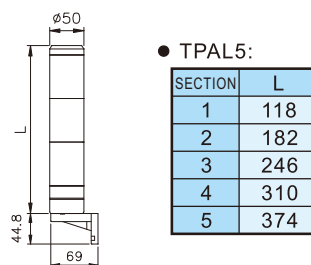
TPFF5/TPFS5/TPFB5



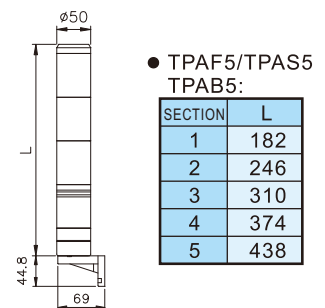
TPFQF5/TPFQS5/TPFQB5



TPAL5

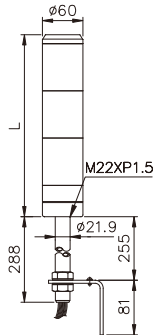


TPAF5/TPAS5/TPAB5



■ DIMENSIONS

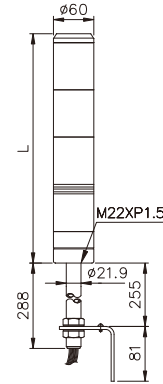
TPTL6



● TPTL6:

SECTION	L
1	130
2	200
3	270
4	340
5	410

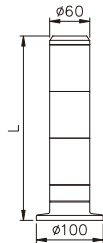
TPTF6/TPTS6/TPTB6



● TPTF6/TPTS6
TPTB6:

SECTION	L
1	200
2	270
3	340
4	410
5	480

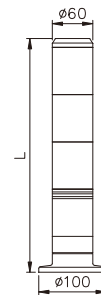
TPWL6



● TPWL6:

SECTION	L
1	136
2	206
3	276
4	346
5	416

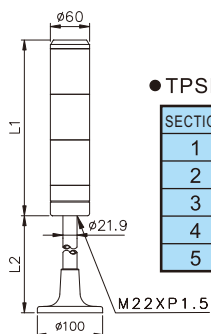
TPWF6/TPWS6/TPWB6



● TPWF6/TPWS6
TPWB6:

SECTION	L
1	206
2	276
3	346
4	416
5	486

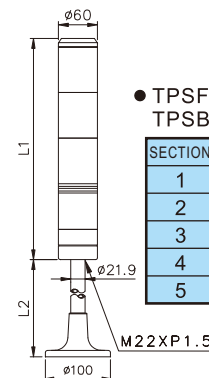
TPSL6



● TPSL6:

SECTION	L1	L2
1	130	Short 161 Long 322
2	200	
3	270	
4	340	
5	410	

TPSF6/TPSS6/TPSB6

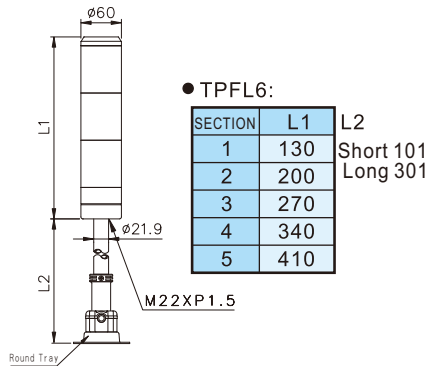


● TPSF6/TPSS6
TPSB6:

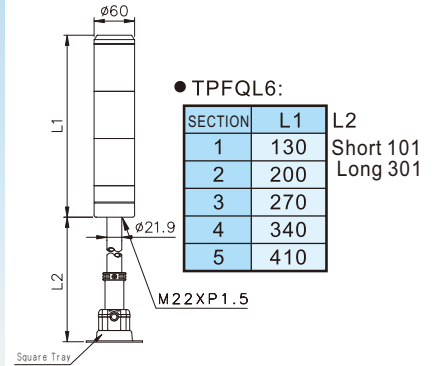
SECTION	L1	L2
1	200	Short 161 Long 322
2	270	
3	340	
4	410	
5	480	

DIMENSIONS

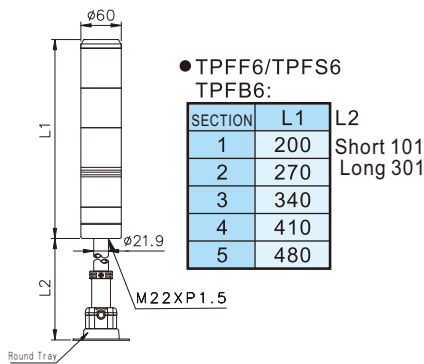
TPFL6



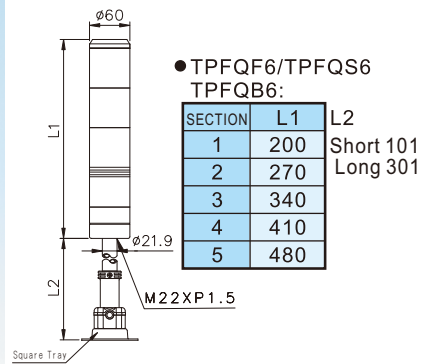
TPFQL6



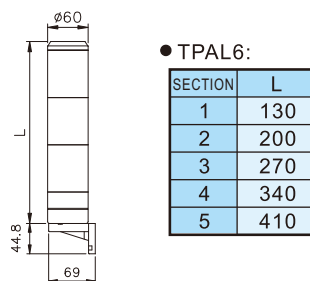
TPFF6/TPFS6/TPFB6



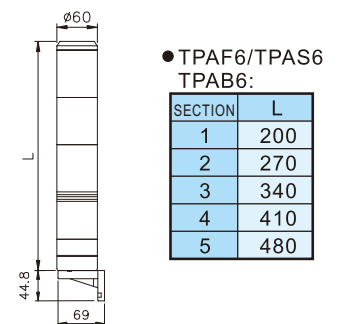
TPFQF6/TPFQS6/TPFQB6



TPAL6

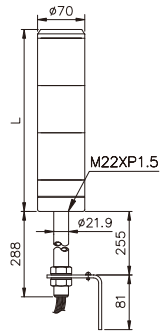


TPAF6/TPAS6/TPAB6



DIMENSIONS

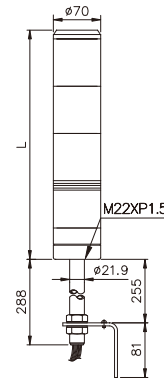
TPTL7



• TPTL7:

SECTION	L
1	130
2	200
3	270
4	340
5	410

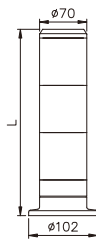
TPTF7/TPTS7/TPTB7



• TPTF7/TPTS7
TPTB7:

SECTION	L
1	200
2	270
3	340
4	410
5	480

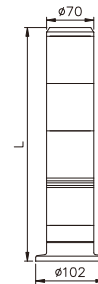
TPWL7



• TPWL7:

SECTION	L
1	136
2	206
3	276
4	346
5	416

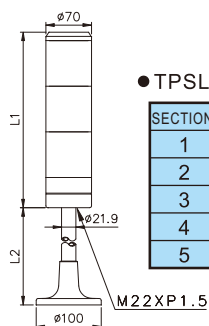
TPWF7/TPWS7/TPWB7



• TPWF7/TPWS7
TPWB7:

SECTION	L
1	206
2	276
3	346
4	416
5	486

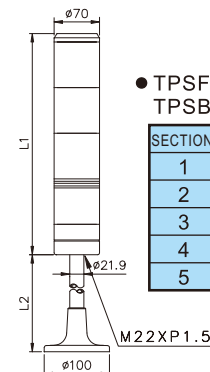
TPSL7



• TPSL7:

SECTION	L1	L2
1	130	Short 161 Long 322
2	200	
3	270	
4	340	
5	410	

TPSF7/TPSS7/TPSB

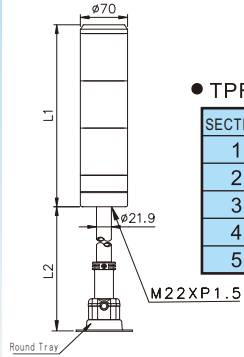


• TPSF7/TPSS7
TPSB7:

SECTION	L1	L2
1	200	Short 161 Long 322
2	270	
3	340	
4	410	
5	480	

DIMENSIONS

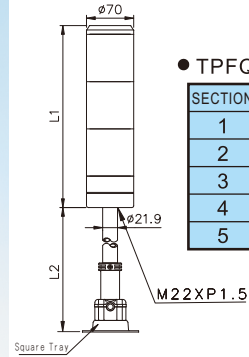
TPFL7



● TPFL7:

SECTION	L1	L2
1	130	Short 101 Long 301
2	200	
3	270	
4	340	
5	410	

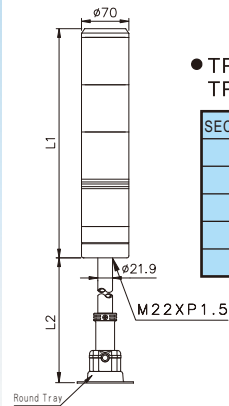
TPFQL7



● TPFQL7:

SECTION	L1	L2
1	130	Short 101 Long 301
2	200	
3	270	
4	340	
5	410	

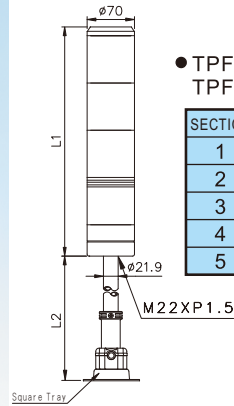
TPFF7/TPFS7/TPFB7



● TPFF7/TPFS7
TPFB7:

SECTION	L1	L2
1	200	Short 101 Long 301
2	270	
3	340	
4	410	
5	480	

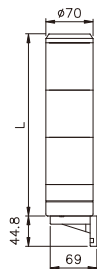
TPFQF7/TPFQS7/TPFQB7



● TPFQF7/TPFQS7
TPFQB7:

SECTION	L1	L2
1	200	Short 101 Long 301
2	270	
3	340	
4	410	
5	480	

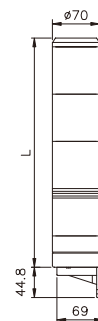
TPAL7



● TPAL7:

SECTION	L
1	130
2	200
3	270
4	340
5	410

TPAF7/TPAS7/TPAB7



● TPAF7/TPAS7
TPAB7:

SECTION	L
1	200
2	270
3	340
4	410
5	480