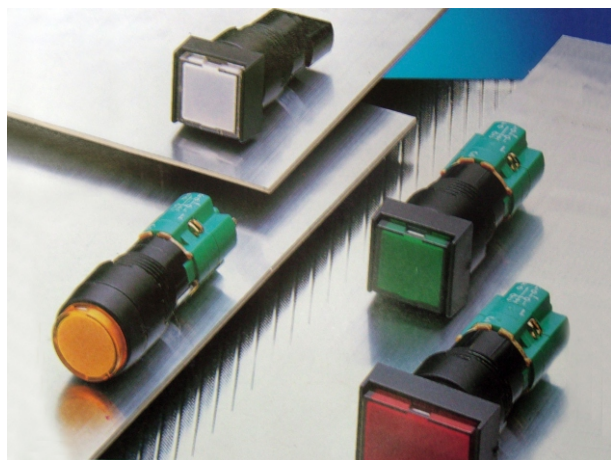
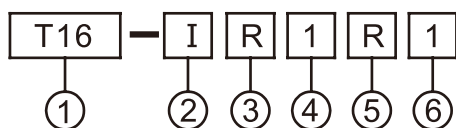


MODEL DESIGNATION



CHARACTERISTICS

Contact resistance	50mΩ max.
Insulation resistance	100MΩ min. (at500VDC)
Dielectric strength	1500VAC,50/60Hz for 1minute
Ambient temperature	operating: -20°C ~80°C
Humidity	95% RH max.
Operation force	150 g
Service life	Mechanically:1,000,000 operations min. Electrically:100,000 operations min.
Weight	10 gr(1a1b) 15 gr(4a4b)

Designation	Signal	Description
1.Mounting Hole	T16	16mm Series
2.Type	I B P G W	ILLuminated Push Button(Alternate) ILLuminated Push Button(Momentary) Pilot lamp Switch Guard Sealing Cap
3.Shape	R S L	Round Square Rectangular
4.Voltage	1 2 5 6 7 8 9	110VAC (Neon lamp) 220VAC (Neon lamp) 6VAC/DC (incandescent lamp) 18VAC/DC (incandescent lamp) 24VAC/DC (incandescent lamp) 30VAC/DC (incandescent lamp) 12VAC/DC (incandescent lamp)
5.Lens Color	R G O W BL Y	Red Green Orange White Blue Yellow
6.Contact Blocks	1 2 3 4	1a1b(1 No 1NC) 2a2b(2 No 2NC) 3a3b(3 No 3NC) 4a4b(4 No 4NC)

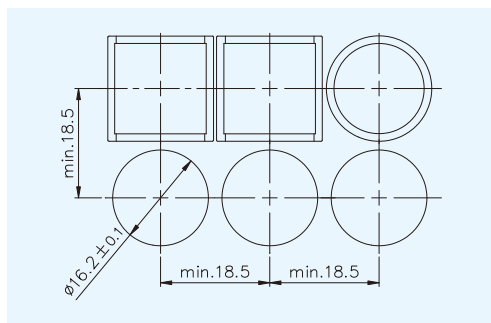
RATING

Rated insulation voltage			250VAC		125VAC		Contact	Length
Rated continuous current(A)			3A		5A			
Rated operating current(A)								
AC			DC					
Voltage	AC13	AC12	Voltage	DC13	DC12			
110V	0.7A	1A	12V	0.7A	1A	1a1b	41.5mm	
220V	0.5A	0.5A	24V	0.7A	1A	2a2b	49.5mm	
						3a3b	57.5mm	
						4a4b	65.5mm	

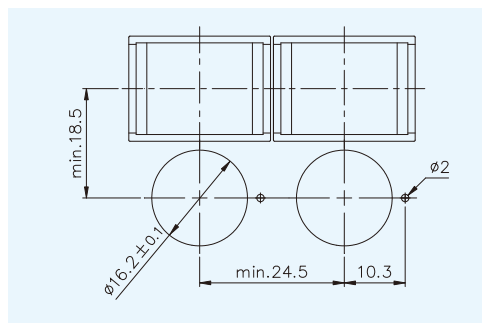
AC13/DC13:Inductive load; AC12/DC12:Resisvw load

PANEL MOUNTING

● (R,S TYPE)

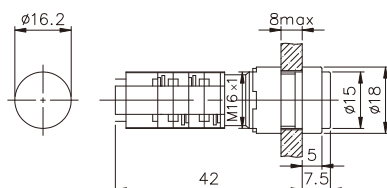


● (L TYPE)

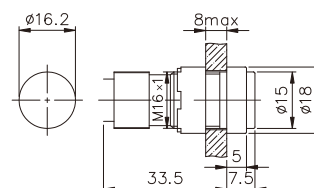


DIMENSIONS

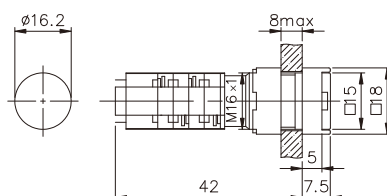
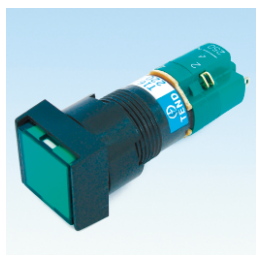
T16-IR (Alternate)
T16-BR (Momentary)



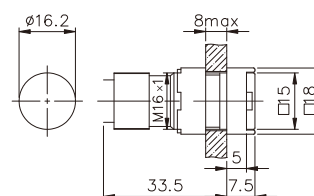
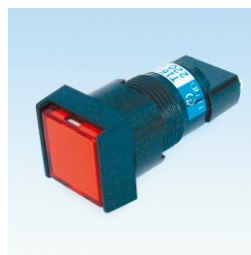
T16-PR



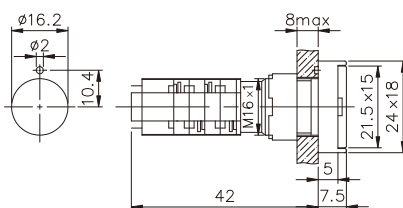
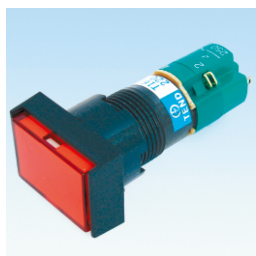
T16-IS (Alternate)
T16-BS (Momentary)



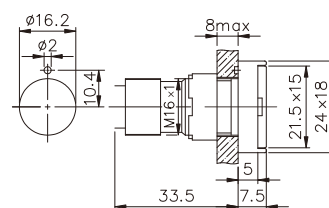
T16-PS



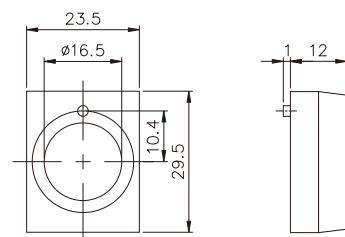
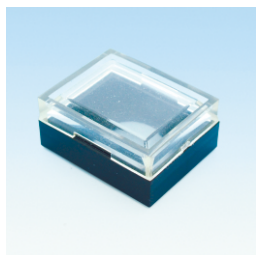
T16-IL (Alternate)
T16-BL (Momentary)



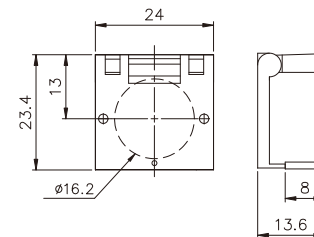
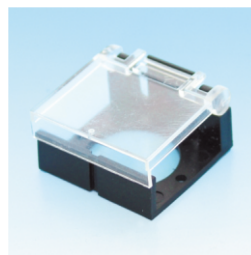
T16-PL



T16-WL



TN16-GL



• MINIATURE TELEPHONE BULB
T-4.5



Voltage	Wattage	Diameter	Length
V	W	mm	mm
6	0.3	4.2±0.2	16.5 ^{+0.5} ₋₁
12	0.5		
18	0.5		
24	0.5		
28	0.7		
110V	0.3		
220V	0.3		

• TIGHTENING TOOL FOR FIXING LAMP
T16-A

