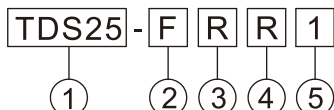


Feature

- These main switches can be divided into 3P and 4P series, each of which has 6 types ranging from 16A to 80A according to rated current.
- Installation includes fixed way(fixed on the operating panel) and detached way(contact fixed in the control box whereas upper base and handles fixed on the tope cover of control box).
- Detachable type can be in installed on TBR-N (standard aluminium rail-wide rail).
- There are two types of switching handles :standard and round. Standard is colored red/yellow or black/ silver while round ones in red/yellow or black/gray.

Model designation



Designation	Signal	Description
1.Capacity	TDS16	16A(3P)
	TDS25	25A(3P)
	TDS33	33A(3P)
	TDS40	40A(3P)
	TDS66	66A(3P)
	TDS80	80A(3P)
	TDS416	16A(4P)
	TDS425	25A(4P)
	TDS433	33A(4P)
	TDS440	40A(4P)
	TDS466	66A(4P)
	TDS480	80A(4P)
2.Installation way	F	Fixed way
	B	Detched way
	E	Control staions
3.Handle	S	Standard handle
	R	Rotundity handle
4.Color	B	Black / silver gray
	R	Red/yellow
5.Transmission rod length (only detached way)	None	100mm
	1	150mm
	2	250mm
	3	300mm

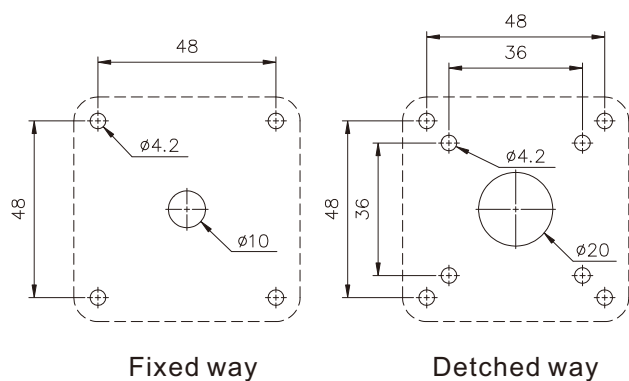
Specifications

Type		TDS16 TDS416	TDS25 TDS425	TDS33 TDS433	TDS40 TDS440	TDS66 TDS466	TDS80 TDS480
AC-3 (kw)	220V~240V	2.2	4.0	5.5	7.5	11.0	15.0
	380V~440V	3.7	5.5	7.5	11.0	18.5	22.0
	660V~690V	3.7	5.5	7.5	15.0	22.0	30.0
AC-23 (kw)	220V~240V	3.0	5.5	5.5	7.5	11.0	18.5
	380V~440V	5.5	7.5	11.5	15.0	22.0	30.0
	600V~690V	5.5	7.5	11.5	18.5	30.0	37.0
AC-21		16A	25A	33A	40A	66A	80A

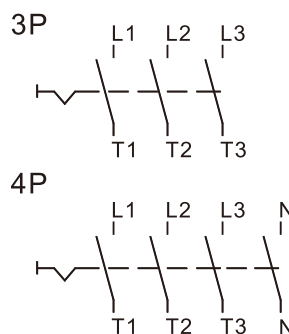
Type		TDS16 TDS416	TDS25 TDS425	TDS33 TDS433	TDS40 TDS440	TDS66 TDS466	TDS80 TDS480
AC-3 (hp)	110V~120V	1	1.5	2	3	5	7.5
	220V~240V	2	3	5	7.5	10	20
	380V~440V	3	5	10	15	20	40
	500V~600V	3	5	10	15	20	50

3 phase.3 poles

Plate dimensions

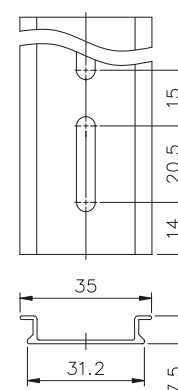


Wiring diagram



TBR-N(Dimenditions)

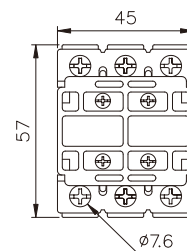
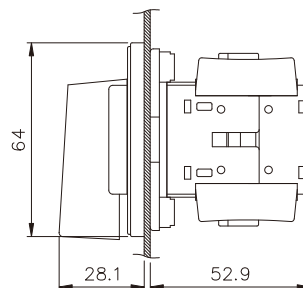
(used on detached way)



■ Dimensions

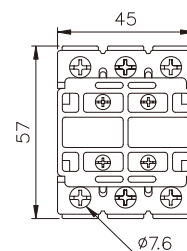
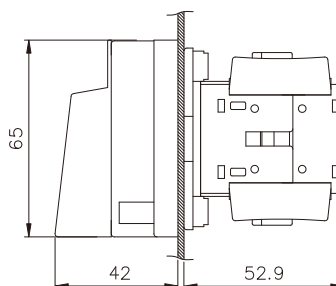
TDS16/25/33-FSB

TDS16/25/33-FSR



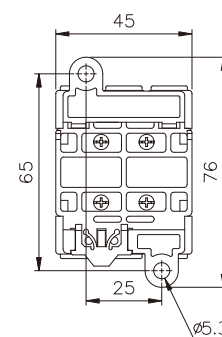
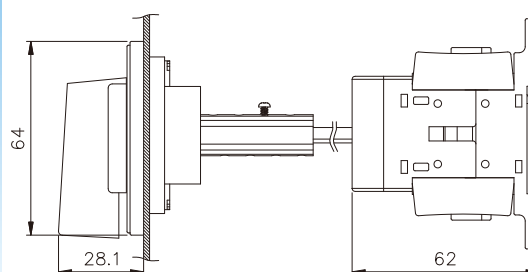
TDS16/25/33-FRB

TDS16/25/33-FRR



TDS16/25/33-BSB

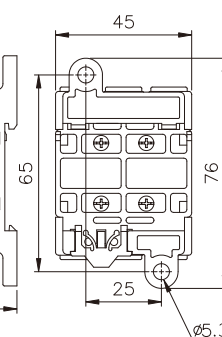
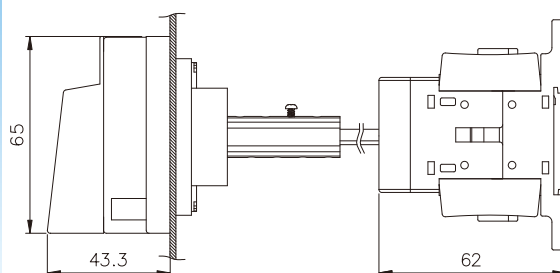
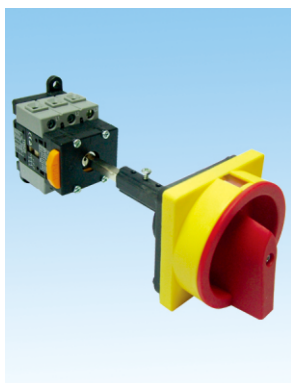
TDS16/25/33-BSR



Fixing hole dimension

TDS16/25/33-BRB

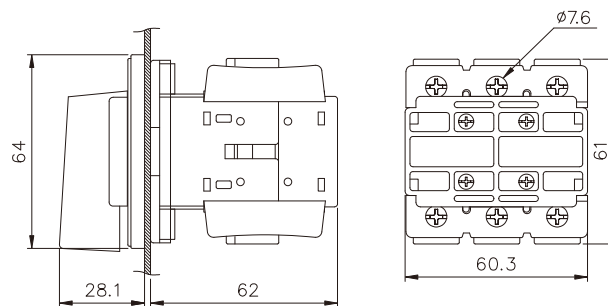
TDS16/25/33-BRR



Fixing hole dimension

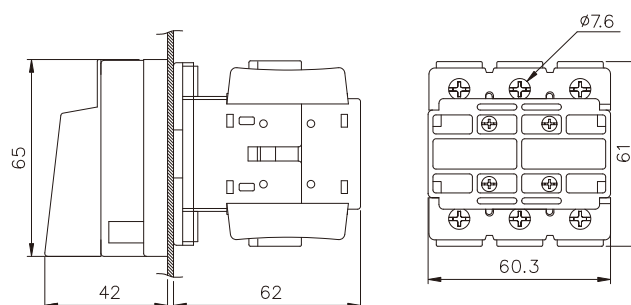
TDS40/66/80-FSB

TDS40/66/80-FSR



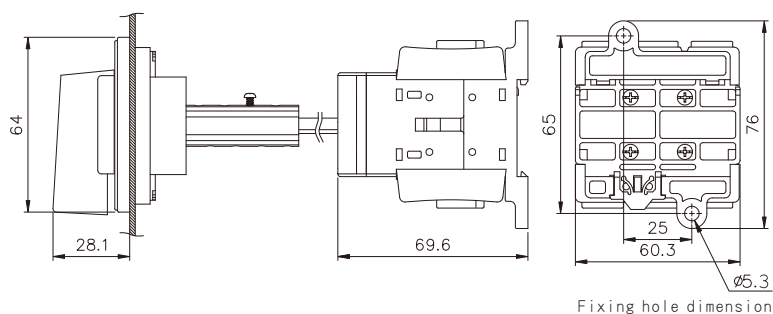
TDS40/66/80-FRB

TDS40/66/80-FRR



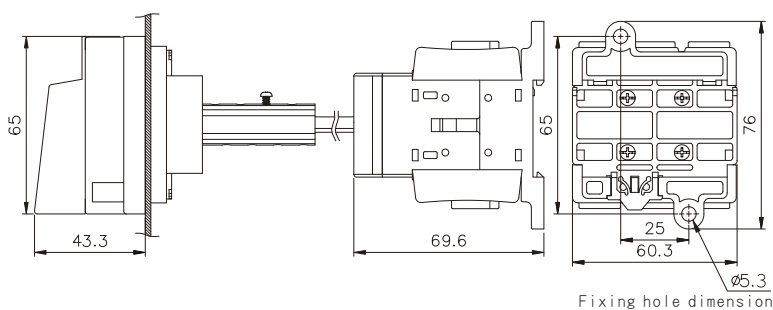
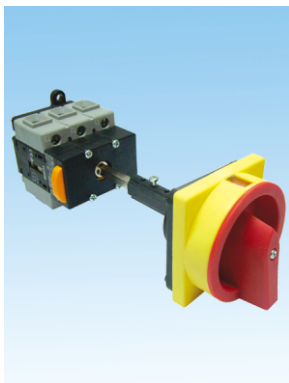
TDS40/66/80-BSB

TDS40/66/80-BSR



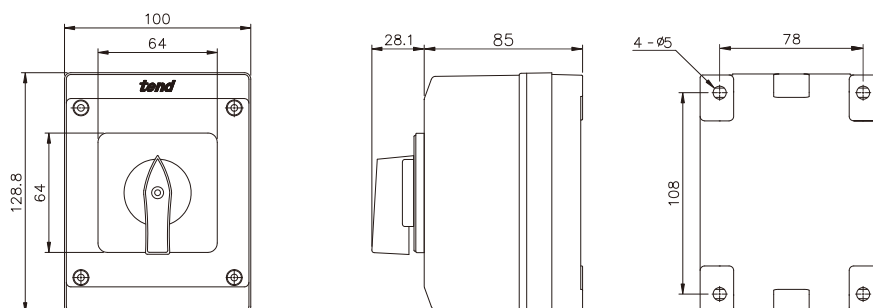
TDS40/66/80-BRB

TDS40/66/80-BRR

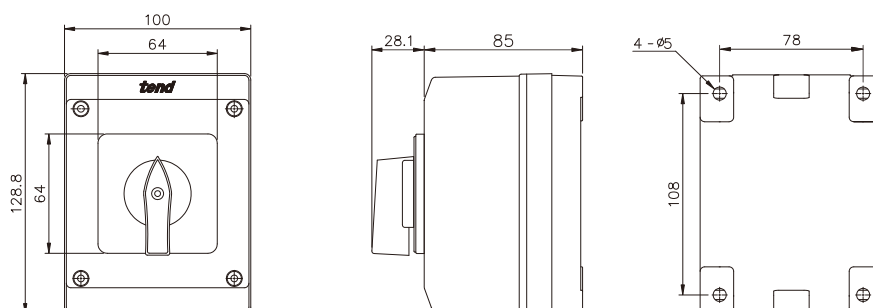


■ Control stations

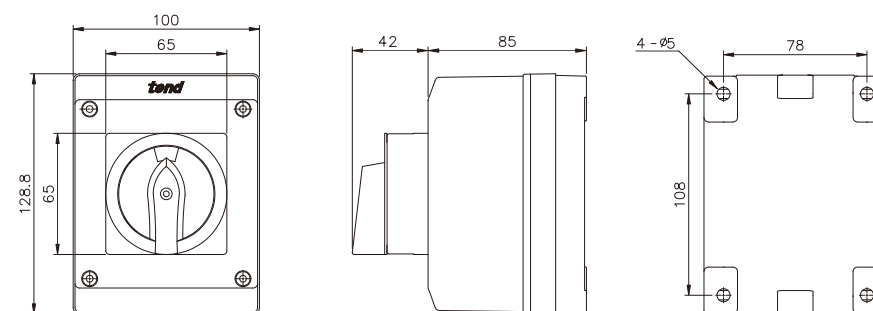
TDS□-ESB



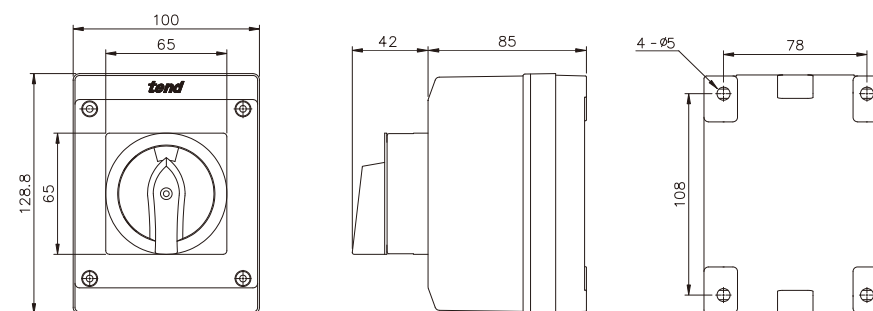
TDS□-ESR



TDS□-ERB

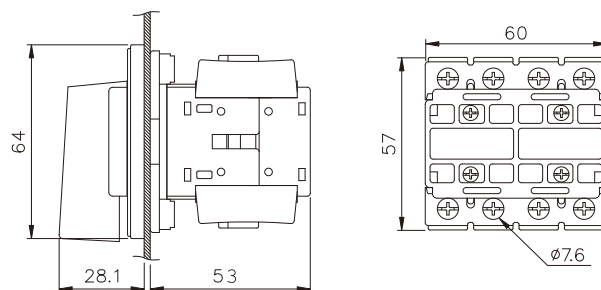


TDS□-ERR

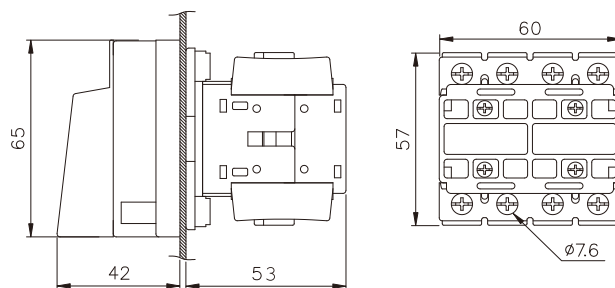
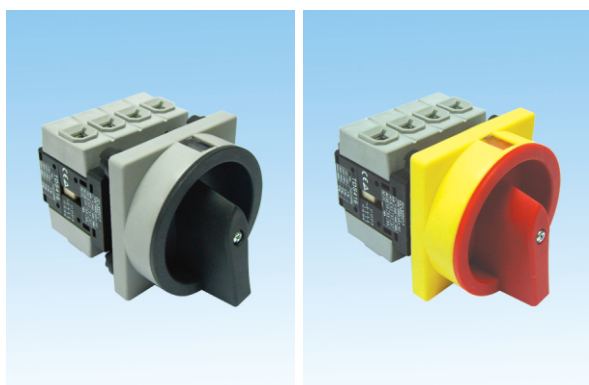


■ Dimensions

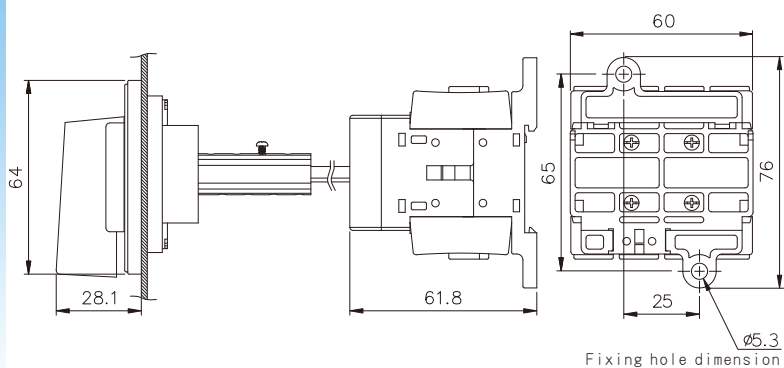
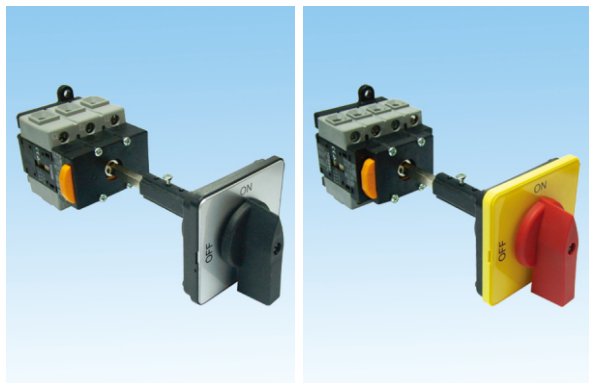
TDS416/425/433/440-FSB TDS416/425/433/440-FSR



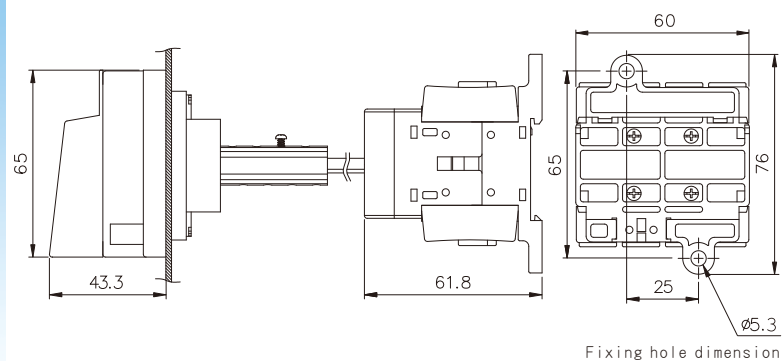
TDS416/425/433/440-FRB TDS416/425/433/440-FRR



TDS416/425/433/440-BSB TDS416/425/433/440-BSR



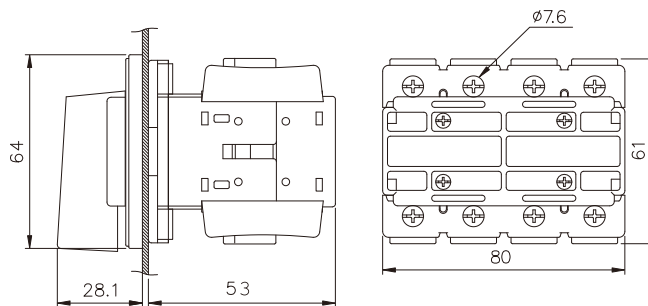
TDS416/425/433/440-BRB TDS416/425/433/440-BRR



TDS466/480-FSB



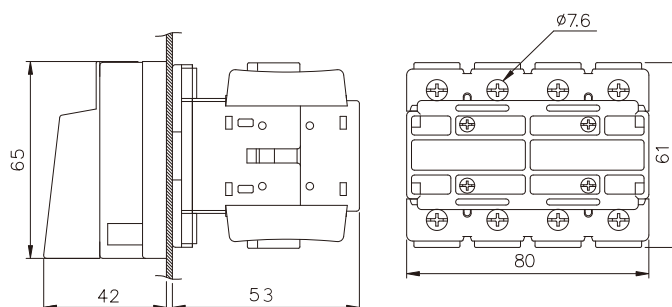
TDS466/480-FSR



TDS466/480-FRB



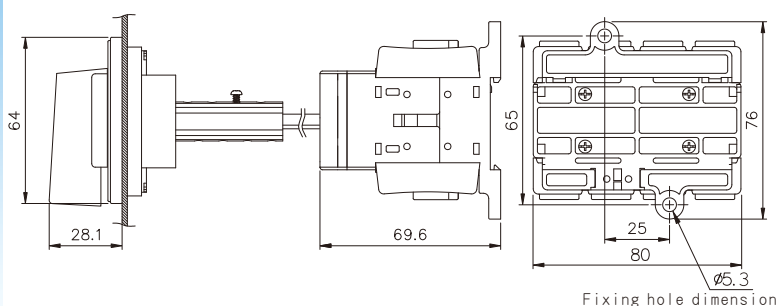
TDS466/480-FRR



TDS466/480-BSB



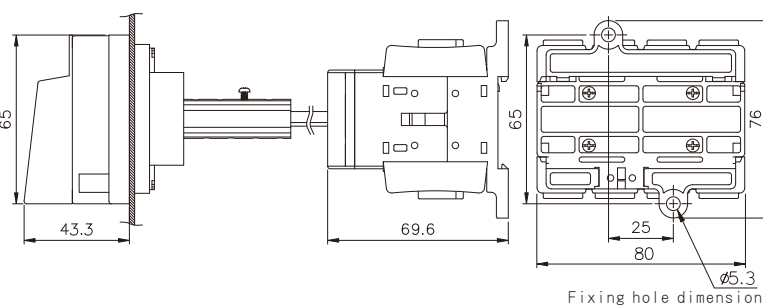
TDS466/480-BSR



TDS466/480-BRB



TDS466/480-BRR

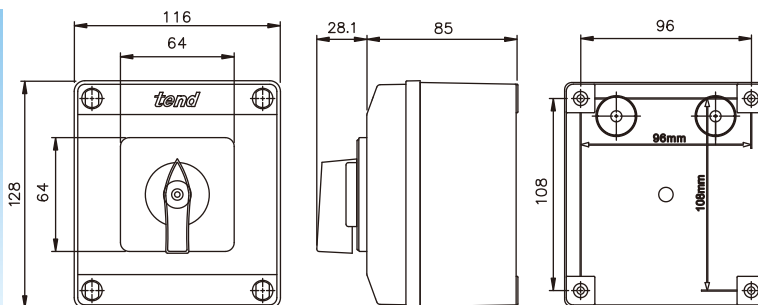


Control stations

TDS4□-ESB



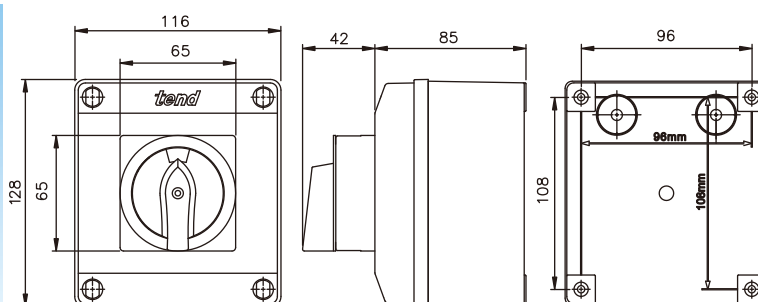
TDS4□-ESR



TDS4□-ERB



TDS4□-ERR

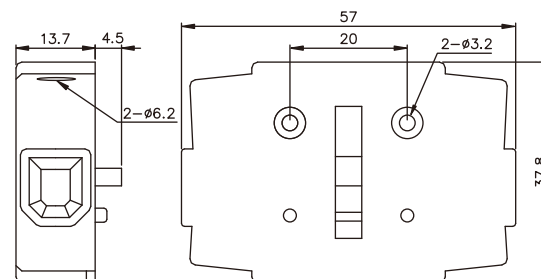


Reinforcing Contact Block & Cover

TDS16/33-AF/AB□ □ : blank=1P;2=2P(Single Side)



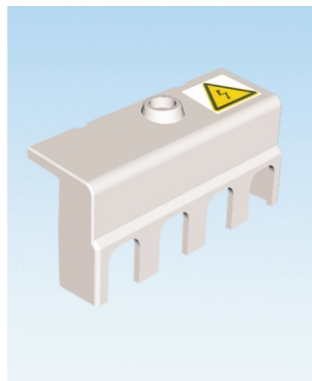
Designation	Description
TDS16-AF□	16A Fixed Reinforcing Contact Block
TDS33-AF□	33A Fixed Reinforcing Contact Block
TDS16-AB□	16A Detachable Reinforcing Contact Block
TDS33-AB□	33A Detachable Reinforcing Contact Block



1NO —

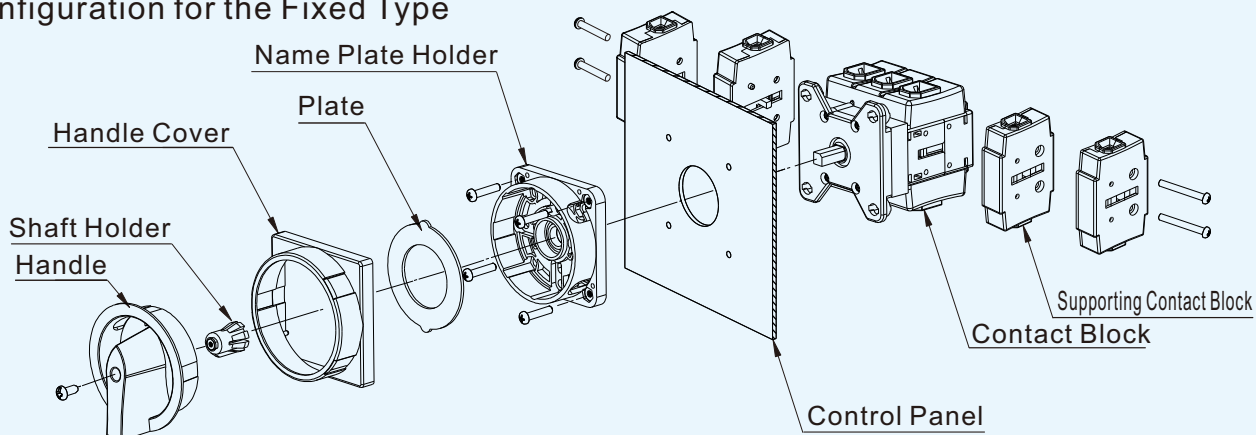
- Can be used as the main contact block with the same voltage, or as an reinforcing contact block with different voltage.
- A maximum of two sets of reinforcing contact blocks can be attached on one side.

TDS40/80-C4

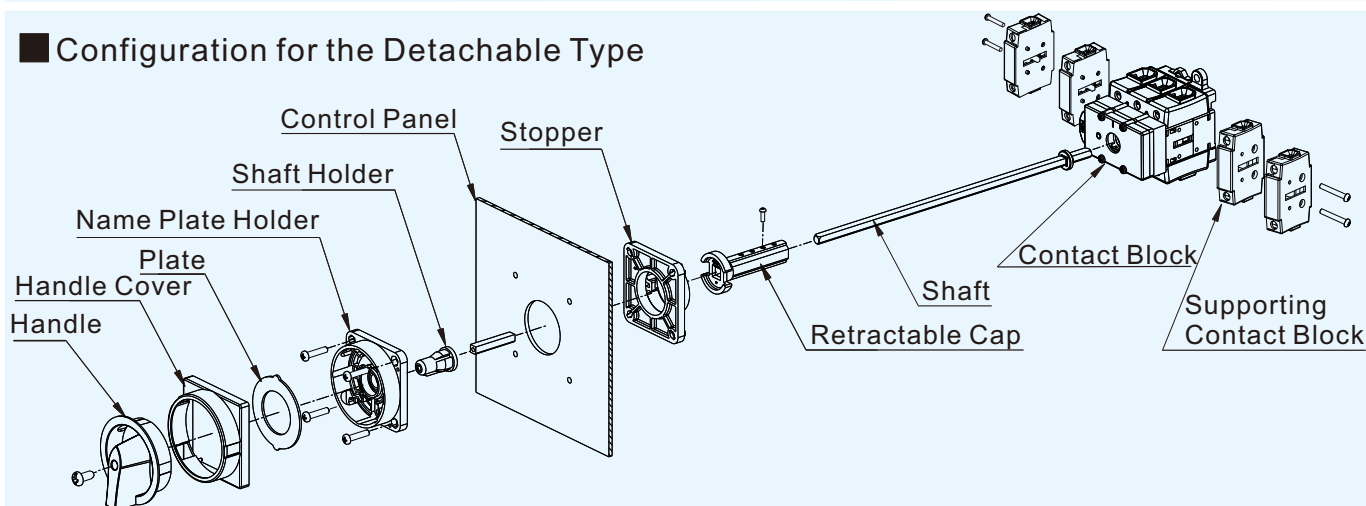


Designation	Description
TDS40-C4	40A-4P Cover (16A~40A)
TDS80-C4	80A-4P Cover (66A~80A)

Configuration for the Fixed Type

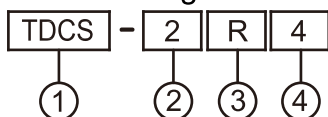


Configuration for the Detachable Type



tend GATED SWITCH (MULTI_STAGE)

Model designation

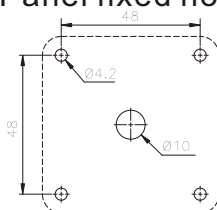


Designation	Signal	Description
1. Mounting Hole	TDCS	GATED SWITCH (MULTI_STAGE)
2. Capacity	1	10A
	2	16A
	3	25A
3. Handle color	R	Red/yellow
	B	Black / silver gray
4. Contact form	2	0 2A
	3	0 3A
	4	0 4A

Characteristics

- This series of circular handle only 90° Sec type, handle red / yellow and black / gray two options.
- Contact patterns can be divided into two groups tap (0 2A), the contact group 3 tap (0 3A) and four contact group tap (0 4A)
- Switching according to current capacity is divided into 10A, 16A, 25A, a total of three, specifications please refer to TA41 page.
- Block capacity to tap the color distinction 10A of blue, gray 16A, 25A black.

Panel fixed hole



Contact Figure

