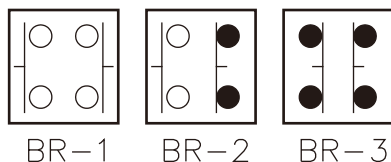


## FEATURES

1. You can smoothly and swiftly handle the lever in four directions-upward, rightward, downward and leftward.
2. Three alternatives of movement are attainable in each direction: Go-on, auto-return and blockade-enforcing.
3. You are free as you like to operate in four, three or two directions with the switch.
4. Rubber bushing is water-proof, oil-resistant, and bust-preventive.



## RATED CURRENT

AC	110VAC	220VAC	440VAC
	10A	6A	3A
DC	110VDC	220VDC	
	2A	1A	

## MODEL DESIGNATION

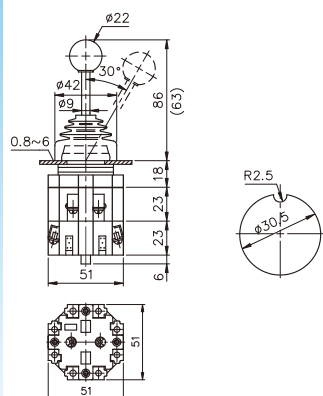
TMR	30	2	1	1	1	10,10,10,10
①	②	③	④	⑤		

Designation	Signal	Description
1. Type	TMR, TMRs	Round
	TMRN, TMRsN	Square
	TMRM, TMRsM	Round(rubber handle)
2. Mounting Hole	30	Ø30m/m
3. No. of Contact Blocks Fitted	1~4	1~4
4. Movement way	1	Go-on
	2	Auto-Retern
	0	Blockade-enforcing
5. Type of Contact Blocks Fitted	00	None
	10	1a (1NO)
	20	2a (2NO)
	01	1b (1NC)
	02	2b (2NC)
	11	1a1b (1NO-1NC)

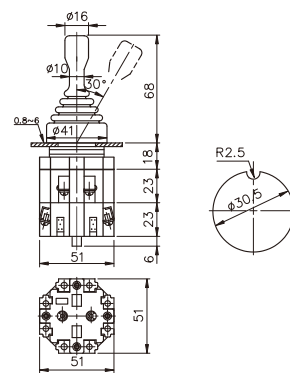
Ambient temperature	-20°C ~+60°C	
Continuous passable current	Resistivity values in the following 15mΩ (initial value)	
Insulation Resistance	DC500V imposed voltage, measured in more than 100MΩ	
Dielectric Strength	AC2500V acceptable voltage tests a minute.	
Service Life	Machinery	1,000/hour opening and closing frequency, 500,000 or more times
	Electric	

## DIMENSIONS

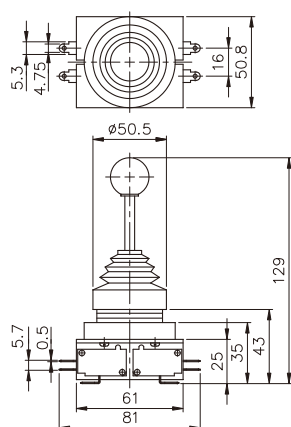
### TMR-302



### TMRM302



### TMRS-304



### TMRSN-304

