

tend (DIN RAIL MOUNTED) FUSE BOX

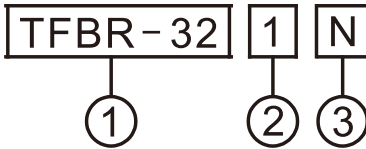
TFBR



FEATURES

The fuse boxer be mounted in DIN rail (TBR-N) or panel directly. Cabling range from 1.5mm²~8mm². Make sure power has been cut off before change fuse. The indicator lamp will turn on when power is off.

MODEL DESCRIPTION



Designation	Signal	Description
1.Type	TFBR-32	Din rail mounted fuse box
2.No. of pole	1 2 3	1 pole 2 pole 3 pole
3.Indicator lamp	N None	110~500 VAC No lamp

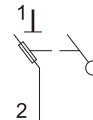
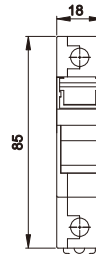
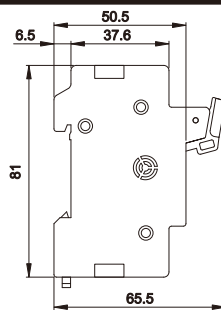
SPECIFICATIONS

Rated voltage	Rated current	Operating temperature	Humidity	Application	Fuse size
600 VAC max.	32A max.	-20°~ +80°C	95% RH max.	cable protection motor protection	Ø10X38

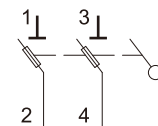
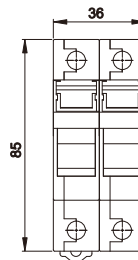
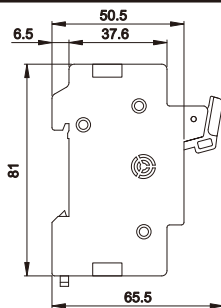
DIMENSIONS

WIRING DIAGRAM

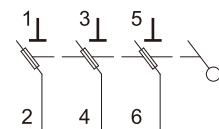
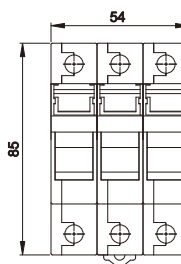
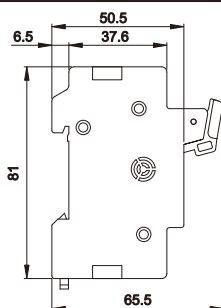
TFBR-321N



TFBR-322N



TFBR-323N



FUSE BOX(Without indicator lamp)

TFBR-321



TFBR-322

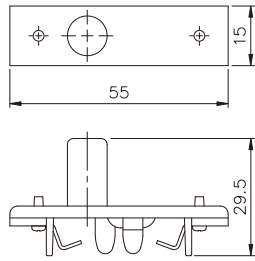
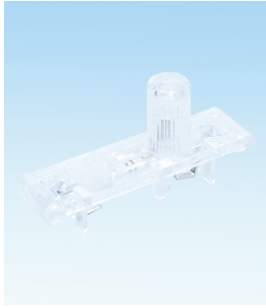


TFBR-323

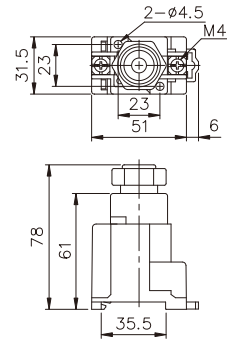
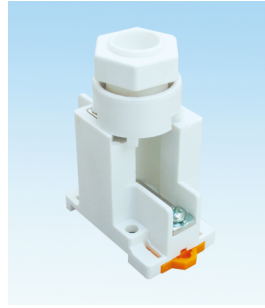


tend FUSE FUSE BOX

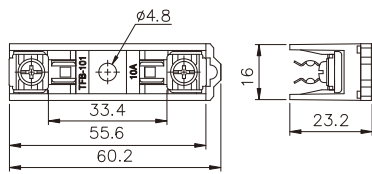
TFB-101N



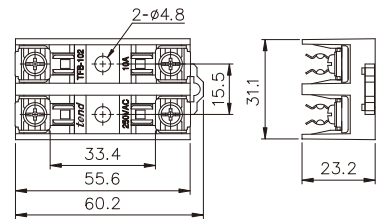
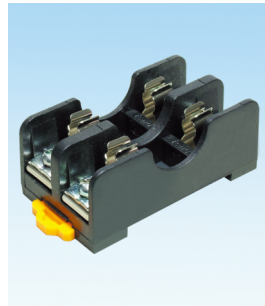
TFE-16N



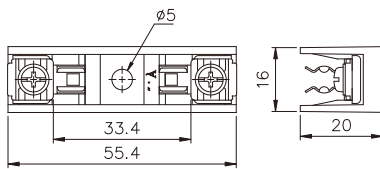
TFBR-101



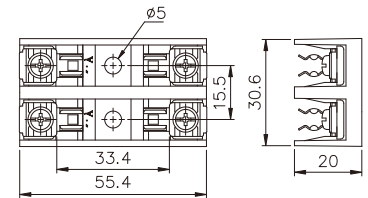
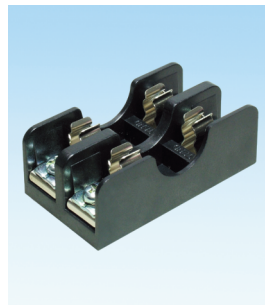
TFBR-102



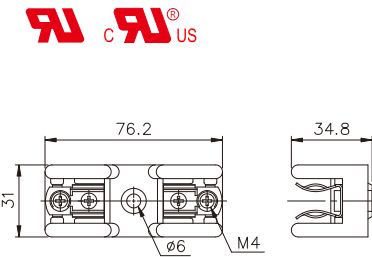
TFB-101



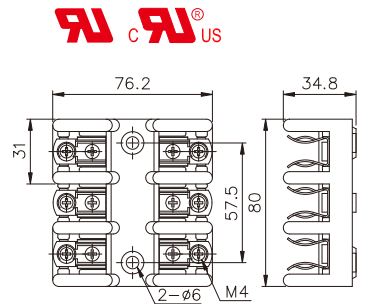
TFB-102



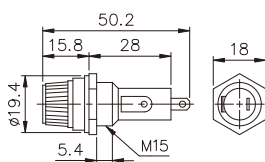
TFB-301



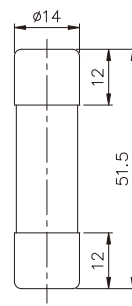
TFB-303



TFB-15



TFU-50(1A~50A)



TFU-16(2A~30A)

